

PURSUANT TO SECTION 107 OF THE LAND TITLE ACT.  
CITY OF KELOWNA  
BCGS 02E.093

0 5 10  
ALL DISTANCES ARE IN METRES AND DECIMALS THEREOF.  
THE INTENDED PLOT SIZE OF THIS PLAN IS 550m IN  
WIDTH BY 600m IN HEIGHT (0.522) WHEN PLOTTED AT  
A SCALE OF 1:250



| DATUM: NAD83 (CGRS) / 4.0 BC 1, UTM ZONE 11 |            |           |                   |
|---|------------|-----------|-------------------|
| STATION                                     | NORTHING   | EASTING   | ABSOLUTE ACCURACY |
| 8942130                                     | 532209.885 | 32729.779 | 0.02              |
| 8942135                                     | 532209.239 | 32807.261 | 0.02              |

NOTE FOR MAPPING PURPOSES ONLY.  
THE UTM COORDINATES AND ESTIMATED ABSOLUTE ACCURACY  
ACHIEVED ARE DERIVED FROM THE MOST PUBLISHED  
COORDINATES AND STANDARD DEVIATIONS FOR GEODETIC  
CONTROL MONUMENTS 8942130 AND 8942135

**LEGEND**

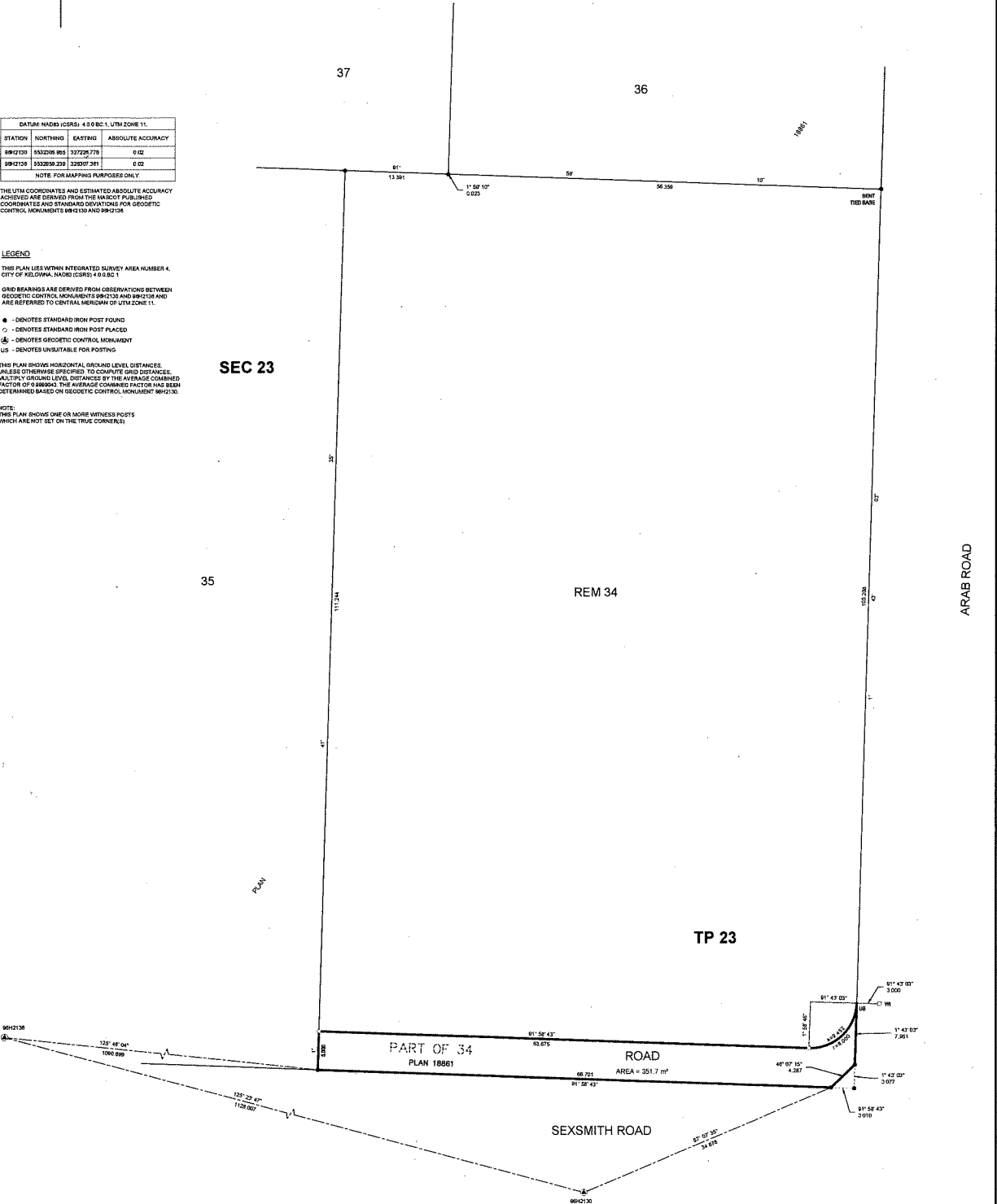
THIS PLAN LIES WITHIN INTEGRATED SURVEY AREA NUMBER 4,  
CITY OF KELOWNA, NAD83 (CGRS) / 4.0 BC 1

GRID BEARINGS ARE DERIVED FROM OBSERVATIONS BETWEEN  
GEODETIC CONTROL MONUMENTS 8942130 AND 8942135 AND  
ARE REFERRED TO CENTRAL MERIDIAN OF UTM ZONE 11.

- - DENOTES STANDARD IRON POST FOUND
- - DENOTES STANDARD IRON POST PLACED
- ⊕ - DENOTES GEODETIC CONTROL MONUMENT
- ⊖ - DENOTES UNSUITABLE FOR POSTING

THIS PLAN SHOWS HORIZONTAL GROUND LEVEL DISTANCES,  
UNLESS OTHERWISE SPECIFIED, TO COMPUTE GRID DISTANCES.  
MULTIPLY GROUND LEVEL DISTANCES BY THE AVERAGE CORRECTION  
FACTOR OF 0.99943. THE AVERAGE CORRECTION FACTOR HAS BEEN  
DETERMINED BASED ON GEODETIC CONTROL MONUMENT 8942130.

NOTE:  
THIS PLAN SHOWS ONE OR MORE WITNESS POSTS  
WHICH ARE NOT SET ON THE TRUE CORNERS



**bennett**  
LAND SURVEYING LTD.  
82 LAND SURVEYING  
#211 1470 ST. PAUL STREET  
KELOWNA, BC  
V1Y 2E8  
TEL 250-863-5711  
www.bennettsurveys.com  
FD23 P30-32 (P3)

THIS PLAN LIES WITHIN THE JURISDICTION OF  
THE APPROVING OFFICER FOR  
CITY OF KELOWNA.  
THIS PLAN LIES WITHIN THE  
REGIONAL DISTRICT OF CENTRAL OKANAGAN  
THE FIELD SURVEY REPRESENTED BY THIS PLAN WAS  
COMPLETED ON THE 08 DAY OF MAY, 2023  
JANER SM, KCL5934